



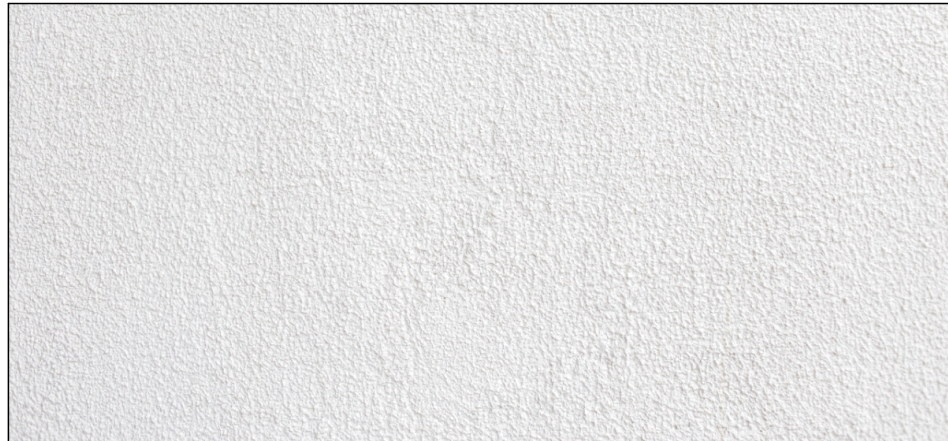
West Elevation
scale 1:100



CEMINTEL CLADDING TO EXT. WALL & FEATURE BLADE WALL



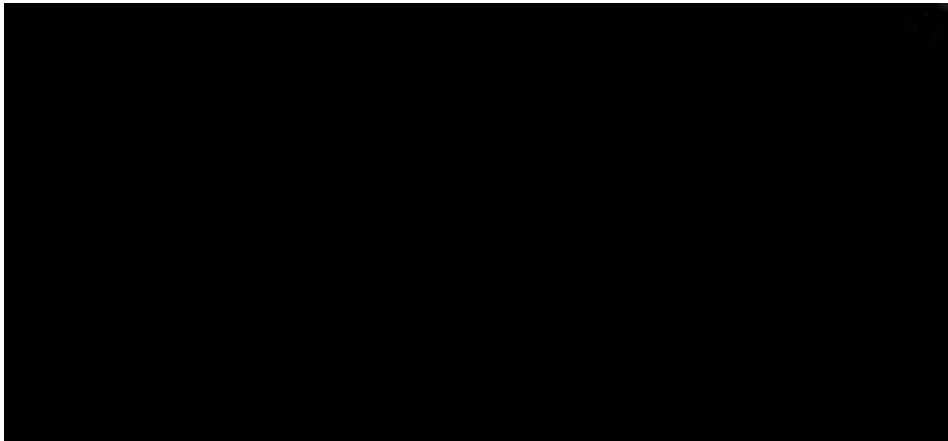
FACEBRICK - PGH - SANDSTOCKS BALMAIN TO EXT. WALLS



WHITE RENDER TO EXT. WALLS



COLORBOND WOODLAND GREY - METAL DECK ROOF & COLUMNS



COLORBOND NIGHT SKY - WINDOW & DOOR FRAMES

All work to be carried out in accordance with BCA, AS & Council conditions.
Copyright: The concepts & information contained in these drawings are the copyright of Istaal Group Pty Ltd. Use or duplication in part or in full without written permission of Istaal Group Pty Ltd constitutes an infringement of copyright. Do not scale off architectural drawings. These notes must be read in conjunction with various sections for additional details on appliances, PC items & shower sizes shown on plans are made too dimensions shower screens to be fixed on inside of non-bulkheads may be required to accommodate drainage lines & steel beams position to be determined on site. Use liquid dimensions ONLY do not scale. Finished ground levels shown on plans are subject to site conditions. All calculated dimensions are subject to site measure during construction & no allowance has been made for shrinkage or milling position of electrical meter to be determined on site in accordance to the final position front garden top on meter.
Energy Smart Design: AAA rated water conservation devices include rimless urinals, shower heads, water tap flow regulators, dual flush toilets & showers & compliant hot water systems with minimum green house score of 3.5 stars are to be used in this development. All occupants are encouraged to use AAA rated dish washing machines with front loading where possible.

NOTES

REV	DATE	DESCRIPTION	REV	DATE	DESCRIPTION
1			2		
3			4		
5			6		
7			8		
9			10		
11			12		
13			14		
15			16		
17			18		
19			20		
21			22		
23			24		
25			26		
27			28		
29			30		
31			32		
33			34		
35			36		
37			38		
39			40		
41			42		
43			44		
45			46		
47			48		
49			50		
51			52		
53			54		
55			56		
57			58		
59			60		
61			62		
63			64		
65			66		
67			68		
69			70		
71			72		
73			74		
75			76		
77			78		
79			80		
81			82		
83			84		
85			86		
87			88		
89			90		
91			92		
93			94		
95			96		
97			98		
99			100		

23-25 Charles Street, Liverpool

IDRAFT

ARCHITECTS

Nominated Architect

Robert William REIFF Architects Registration Board 5347

01544 104611 www.idraft.com.au | PO Box 427, Maryborough 3200

project:

Demolition & construction of a eight (8) storey Residential development containing 23 units under ARHSEPP

client:

Hume Community Housing

council:

Liverpool City Council

drawing title:

West Elevation

designed + drawn:

M.Trinh & P.Revollar

Issue/Stage:

DA - ISSUE A

paper/scale:

A2/1:100

date:

10/12/2020

job #:

28705

dwg #:

2004